

STARCRAFT

CARAVANS & POP TOPS 2013

YOUR ROAD TO FREEDOM



JAYCO *STARCRAFT* DISCOVER THE FREEDOM

A Jayco Starcraft Pop Top or Caravan is the ideal RV for the budget conscious who are seeking value without foregoing quality.

While the Starcraft boasts features synonymous with the Jayco brand, its affordability makes this caravan the first port of call for many fun seekers.

Indeed, those currently weighing up the option of purchasing a 'used' caravan can now 'board' the Starcraft with the added advantage of Jayco's warranty and support services: an option not available for second hand vans.

A Jayco Starcraft... the RV that allows you to see the stars without the price tag!



JAYCO **STARCRAFT** PERFORMANCE

At Jayco, 'affordable' doesn't translate to lack of choice. In fact, the Starcraft Caravan and Pop Top both have 8 versatile floor plans to choose from.

Developed with a cladded aluminium frame, the Starcraft offers features that others call options.

While the external design is testimony to quality control, stepping inside a Starcraft is a voyage familiar to Jayco enthusiasts: solid furniture, lift up beds to maximise space, stainless steel sink with cover, microwave, rubber backed curtains & ties, Dometic 3-way fridge and SMEV 4 burner gas griller in Pop Top (4 burner oven in Caravan) to name just a few.



-
- 01. Drawers under seat cushions
 - 02. Smev 4 gas burner griller in Pop Top
*Smev 4B0 in caravan
 - 03. Dometic 3 way fridge (Pop Top shown)
 - 04. Coleman air conditioner

SUPERIOR STRENGTH

ENDURANCE CHASSIS

- Independent testers describe it as the clever chassis...
- Superior strength and protection.
 - PSC members, that support the floor, are superior to box section steel in terms of bending and compression.
 - The design enables the chassis to be light but still achieve maximum strength.
 - All chassis are galvanized for long life.
 - Pressed holes offer protection for under floor wiring and plumbing.



RELIABLE POWER

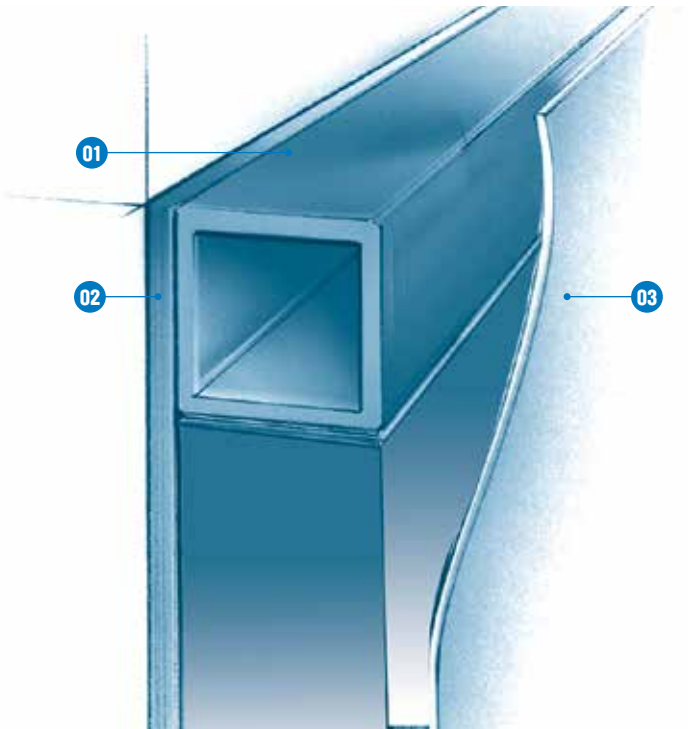
The Setec power converter is Australian-designed and constructed for our country's occasionally inconsistent supply of power in remote areas. This built-in fused power converter provides a safe 12v supply from 240v mains. Produced specifically for Jayco, the Setec system delivers generous lighting on either 240v or 12v supply. When only 12v power is available, the unit is self-sensing and no switching is required. A valuable additional feature of the unit is its built-in trickle charger (13.5v output) to cater for an auxiliary battery.



BONDED ALUMINIUM FRAME

- All Jayco's use aluminium framing in preference to timber for it's strength and long life.
- 19mm Welded Aluminium Frame.
 - Internal Wall Play, Insulation & Aluminium Frame are vacuum bonded for Extra Strength.

- 01. Aluminium Tubular Framing
- 02. Interior Wall Panel
- 03. External Aluminium Cladding



EUROSTYLE FURNITURE

Exclusive timber furniture styling, The latest in design.

- 01. Aluminium framing in all high-use areas such as the dinette, lounge and beds.
- 02. Double beds extend by an additional 150mm
- 03. Orthopaedic slats form an important part of our double & single beds.
- 04. Beds lift up easily with the assistance of gas struts to provide ready access to large storage areas.
- 05. Positive cupboard catches to ensure your valuables travel securely.
- 06. New curved extrusion - adds strength and style
- 07. Lightweight cabinet fronts are securely screwed - not stapled - to provide additional strength.



THE ULTIMATE IN COMFORT AND STYLE

- All cushions use Dunlop™ foam, Australia's most recognized high-resilience foam, providing years of comfort & support.
- Dunlop™ foam is fire retardant.
- All Jayco upholstery features Ultra-Fresh antimicrobial protection, inhibiting growth of mould, mildew and fungi and low in dust mite allergen - assisting in the prevention of allergies, respiratory tract disorders and asthma.



THE JAYCO STARCRAFT FEATURES...
WHAT THE OTHERS CALL OPTIONS!

INTERNAL
FEATURES

- Pillowtop Innerspring Mattress (Double Only)
- Aluminium LP corner furniture extrusion & aluminium seat frames
- Lift up bed's with orthopaedic slats
- Single Innerspring mattress to Caravan (foam to Pop Top)
- Dometic RM2553 way fridge (Caravan)
- Dometic RM2350 3 way fridge (Pop Top)
- SMEV 4 burner gas griller (Oven in Caravans) with one 240v element, 12v ignition & flame failure device
- Microwave
- Built in battery "Trickle" charger
- Flush fitting stainless steel sink with cover
- LED 12v lighting system
- Positive cupboard catches and stays
- Rubber backed curtains
- Designer box pelmets
- Splashbacks to side kitchen
- Roof Mounted Coleman Air Conditioner (Caravan Only)
- Dometic windows with in-built blinds (Caravan Only)



Tunnel boot

EXTERNAL
FEATURES

- Carefree Rollout Awning
- Aluminium Frame and Cladding
- Galvanised "Endurance Chassis"
- One Piece Fiberglass Sandwich roof (Pop Top)
- Easy access boot and boot liner
- Alloy wheels 14"
- 12v annexe light
- Front Pebbleguard
- Front window stone shield (N/A 13.42-1 & 2)
- Insulated roof & walls
- Low 6'11" tow height (Pop Top)
- Grab handle and light at door
- Duel lockable water filler
- 240v external power point
- 1 x 82 water tank (x 2 on shower models)
- 1 x 9kg gas bottle (x 2 on shower models)
- External mains pressure tap
- Rocker leaf spring on tandems
- Durable moulded wheel boxes
- ALKO jockey wheels



Carefree Rollout Awning

OPTIONS

- 18.5"/21.5" HD Sphere TV with built in DVD player
- DVD / CD / MP3 radio player & speakers
- 100amp battery
- Control panel with 2 water tank indicators and battery SOC.
- Sphere 2.5kg washing machine (Caravan only N/A 16.51-3)
- External slide out BBQ*
- Rear window stone shield*
- Fiamma rear bike carrier*
- Add-a-room
- Solar pack
- External shower
- Outback pack
- AL-KO drop jacks
- 12v wind up antenna
- Simplicity Independent Suspension
- RM4601 Fridge (Caravans) (RM2553 Pop Tops)
- AL-KO electronic stability control device
- Drifter control panel with 3 Water Tank indicators and USB Charger

*Not available on all models

OPTIONS FOR YOUR
JAYCO STARCRAFT

01. AL-KO electronic stability control device

02. Cd am/fm stereo with ipod aux

03. RV control panel

04. 2 x external speakers

05. Alko drop jacks

06. Drifter control panel with USB charger
07. Winegard Sensor Pro Windup 12v TV antenna

08. 18.5"/21.5" LED HD Sphere TV with built in DVD player

09. External foldout BBQ (Selected models only)

10. Bike racks

11. External shower

12. External foldout table



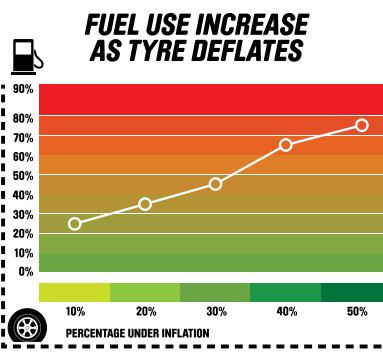
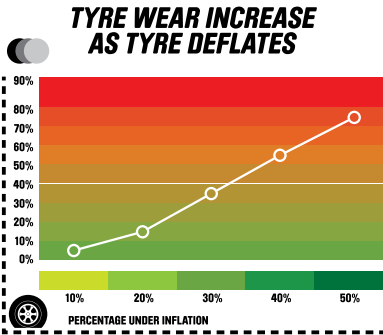
JAYCO CARAVANS TYRES
ARE FILLED WITH NITROGEN



Jayco has implemented a state of the art Nitrogen-based pressurisation system for its entire range of RV's.

Nitrogen offers the following benefits over compressed air:

- Fuel savings of up to 3%
- 25% in reduction of tyre wear
- Reduction in tyre blowouts
- Eliminates interior wheel corrosion
- Improved handling and safety



THE JAYCO OUTBACK RANGE...

GET OFF THE BEATEN TRACK

OK, you're an explorer by nature... a spirit of adventure bigger than most.

With Jayco's Outback range you can now venture throughout Australia's vast network of unsealed roads*, freeing you up to find some of the nation's most incredible hideaways.

Jayco's Outback range has the added strength and clearance you'll need for rugged conditions, but there are limits!

Some bush tracks are barely suitable for a 4WD, let alone a Starcraft!

One thing's for sure: when you reach your destination, you'll really appreciate the home comforts inside your Jayco Outback Starcraft!

When you are driving in unfamiliar territory, always take precautions such as driving slower and with extra care... as the most experienced 4-wheel drivers say: "it's best to use your Starcraft as a base station and head into rougher terrain without anything under tow".

Notes

- Overall length including bumper bar & spare wheel increased by 110mm
- Overall height increased by 165mm (Caravans Only)

OUTBACK RANGE FEATURES

- ALKO outback leaf springs
- Shock absorbers with guards (single axle only)
- Underslung axle (tandem axle only) (Improved ground clearance)
- Straight axle on single axles
- RHS galvanised bumper bar
- External 12v auxiliary plug
- Double step
- 15" alloy wheels with 235/75R15 tyres
- 150mm x 50mm RHS main chassis members
- 125mm x 50mm RHS "A" frame
- ALKO outback drop jacks
- ALKO off-road electric brake magnets
- Protective aluminium checker plate finish on sides
- Jayco mud flaps
- Gas bayonet
- Solar provision



SPECIFICATIONS & FLOORPLANS

Whether it's just you, the whole family or a few extra friends... relax. There's a layout that's just perfect for you.

MODEL NO.	Body Length	Interior Length	Travel Length	Travel Height*	Interior Height	Width inc Awning	Towball weight (approx)	Tare weight (approx)
13.42-1	4250mm 13'11"	4122mm 13'6"	5753mm 18'10"	2105mm 6'11"	2015mm 6'7"	2316mm 7'7"	80kg	1113kg
13.42-1.OB	4250mm 13'11"	4122mm 13'6"	5895mm 19'4"	2300mm 7'7"	2015mm 6'7"	2316mm 7'7"	89kg	1288kg
13.42-2	4250mm 13'11"	4122mm 13'6"	5753mm 18'10"	2105mm 6'11"	2015mm 6'7"	2316mm 7'7"	80kg	1095kg
13.42-2.OB	4250mm 13'11"	4122mm 13'6"	5895 19'4"	2300mm 7'7"	2015mm 6'7"	2316mm 7'7"	83kg	1269kg
15.48-4	4863mm 15' 11"	4764mm 15' 7"	6273mm 20' 6"	2155mm 7' 1"	2015mm 6' 7"	2470mm 8' 1"	114kg	1250kg
15.48-4.OB	4863mm 15' 11"	4764mm 15' 7"	6383mm 20' 11"	2345mm 7' 8"	2015mm 6' 7"	2470mm 8' 1"	125kg	1420kg
15.48-5	4863mm 15' 11"	4764mm 15' 7"	6273mm 20' 6"	2155mm 7' 1"	2015mm 6' 7"	2470mm 8' 1"	120kg	1250kg
15.48-5.OB	4863mm 15' 11"	4764mm 15' 7"	6383mm 20' 11"	2345mm 7' 8"	2015mm 6' 7"	2470mm 8' 1"	149kg	1430kg
16.67-1	5310mm 17' 5"	5184mm 17'	6748mm 22' 1"	2155mm 7' 1"	2105mm 6' 7"	2470mm 8' 1"	170kg	1362kg
16.67-1.OB	5310mm 17' 5"	5184mm 17'	6748mm 22' 1"	2345mm 7' 8"	2105mm 6' 7"	2470mm 8' 1"	185kg	1520kg
16.67-3	5310mm 17' 5"	5184mm 17'	6748mm 22' 1"	2280mm 7' 6'***	2105mm 6' 7"	2470mm 8' 1"	155kg	1449kg
16.67-3.OB	5310mm 17' 5"	5184mm 17'	6748mm 22' 1"	2470mm 8' 1'***	2105mm 6' 7"	2470mm 8' 1"	144kg	1650kg
16.67-4	5190mm 17'	5064mm 16' 7"	6628mm 21' 8"	2280mm 7' 6'***	2015mm 6' 7"	2470mm 8' 1"	144kg	1412kg
16.67-4.OB	5310mm 17' 5"	5064mm 16' 7"	6738mm 22' 1"	2345mm 8' 1'***	2015mm 6' 7"	2470mm 8' 1"	147kg	1557kg
16.67-5	5190mm 17'	5064mm 16' 7"	6628mm 21' 8"	2280mm 7' 6'***	2015mm 6' 7"	2470mm 8' 1"	146kg	1440kg
16.67-5.OB	5310mm 17' 5"	5064mm 16' 7"	6738mm 22' 1"	2470mm 8' 1'***	2015mm 6' 7"	2470mm 8' 1"	145kg	1545kg
16.51-3	5335mm 17' 2"	5100mm 16' 7"	6758mm 22'1"	2895mm 9'6"	1978mm 6' 5"	2470mm 8' 1"	172kg	1704kg
16.51-3.OB	5335mm 17' 2"	5100mm 16' 7"	6868mm 22' 5"	3050mm 10'0"	1978mm 6' 5"	2470mm 8' 1"	175kg	1820kg
19.61-2	6120mm 20' 1"	5890mm 19' 3"	7545mm 24' 7"	2845mm 9' 4"	1978mm 6' 5"	2470mm 8' 1"	135kg	1973kg
19.61-2.OB	6120mm 20' 1"	5890mm 19' 3"	7655mm 25' 1"	3000mm 9' 10"	1978mm 6' 5"	2470mm 8' 1"	135kg	2105kg
20.62-2	6342mm 20' 10"	6115mm 20' 6"	7765mm 25' 6"	2845mm 9' 4"	1978mm 6' 5"	2470mm 8' 1"	164kg	1988kg
20.62-2.OB	6342mm 20' 10"	6115mm 20' 6"	7875mm 25' 10"	3000mm 9' 10"	1978mm 6' 5"	2470mm 8' 1"	145kg	2100kg
20.62-3	6520mm 21' 4"	6280mm 20' 7"	7945mm 26' 1"	2845mm 9' 4"	1978mm 6' 5"	2470mm 8' 1"	164kg	1992kg
20.62-3.OB	6520mm 21' 4"	6280mm 20' 7"	8055mm 26' 5"	3000mm 9' 10"	1978mm 6' 5"	2470mm 8' 1"	160kg	2110kg
21.66-3	6780mm 22' 3"	6270mm 20' 6"	8203mm 26' 11"	2895mm 9' 6"	1978mm 6' 5"	2470mm 8' 1"	152kg	2020kg

SPECIFICATIONS & FLOORPLANS CONT.

21.66-3.OB	6780mm 22' 3"	6270mm 20' 6"	8313mm 27' 3"	3050mm 10'	1978mm 6' 5"	2470mm 8' 1"	185kg	2140kg
21.66-4	6780mm 22' 3"	6270mm 20' 6"	8203mm 26' 11"	2895mm 9' 6"	1978mm 6' 5"	2470mm 8' 1"	175kg	2020kg
21.66-4.OB	6780mm 22' 3"	6270mm 20' 6"	8313mm 27'3"	3050mm 10'0"	1978mm 6' 5"	2470mm 8' 1"	195kg	2140kg
21.66-7	6780mm 22' 3"	6270mm 20' 6"	8203mm 26' 11"	2895mm 9' 6"	1978mm 6' 5"	2470mm 8' 1"	175kg	2020kg
21.66-7.OB	6780mm 22' 3"	6270mm 20' 6"	8313mm 27' 3"	3050mm 10'0"	1978mm 6' 5"	2470mm 8' 1"	195kg	2140kg
22.68-1	6890mm 22' 7"	6755mm 22' 2"	8313mm 27' 3"	2895mm 9' 6"	1978mm 6' 5"	2470mm 8' 1"	150kg	2130kg
22.68-1 OB	6890mm 22' 7"	6755mm 22' 2"	8423mm 27' 7"	3050mm 10'	1978mm 6' 5"	2470mm 8' 1"	160kg	2215kg

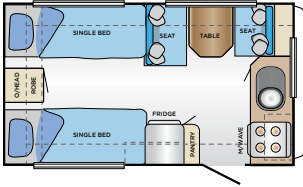
* Includes Coleman Low Profile Air Conditioner. Outback model travel heights increase by 200mm (12 & 13 Pop Top) 100mm (16' Caravan) 165mm (18' - 20' Caravan) 115mm (21' Caravan) over the touring model.

** Travel height includes roof hatch.

The standard unit carrying loads Jayco apply are;
Single Axle, non internal shower units 300kg
Single Axle, internal shower units 375kg
Tandem Axle, non internal shower units 400kg
Tandem Axle, internal shower units 475kg

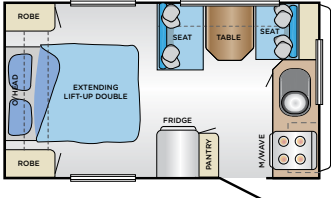
Jayco allow an amount of additional weight (Carrying Load) for each individual unit manufactured above the initial manufactured Tare Weight of the unit. This "Carrying Load" is for the customers individual weight requirements and can be made up of "any" additional weight they propose to load the unit up of. ie water, food, clothes etc.

13.42-1 POP TOP



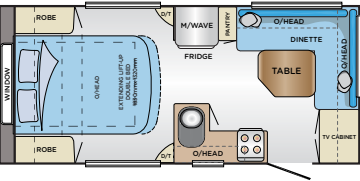
Tare weight: 1085kg
Tow ball: 76kg

13.42-2 POP TOP



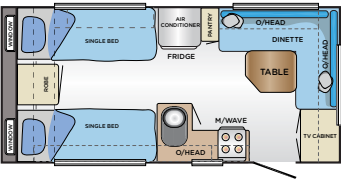
Tare weight: 1068kg
Tow ball: 78kg

15.48-4 POP TOP



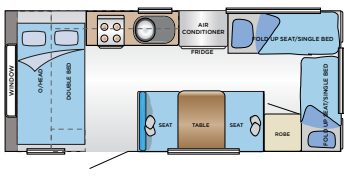
Tare weight: 1635kg
Tow ball: 155kg

15.48-5 POP TOP



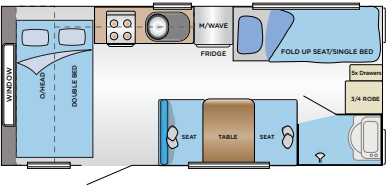
Tare weight: 1250kg
Tow ball: 100kg

16.67-1 POP TOP



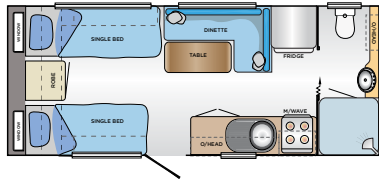
Tare weight: 1635kg
Tow ball: 155kg

16.67-3 POP TOP



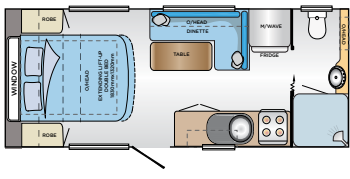
Tare weight: 1860kg
Tow ball: 130kg

16.67-4 POP TOP



Tare weight: 1381kg
Tow ball: 155kg

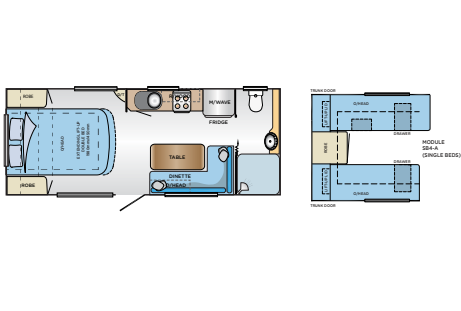
16.67-5 POP TOP



Tare weight: 1381kg
Tow ball: 155kg

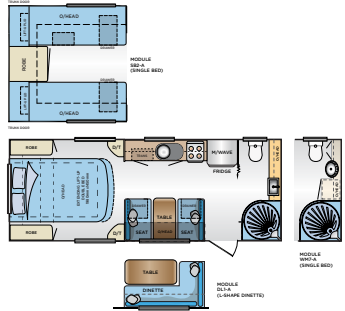
SPECIFICATIONS & FLOORPLANS CONT.

16.51-3 CARAVAN



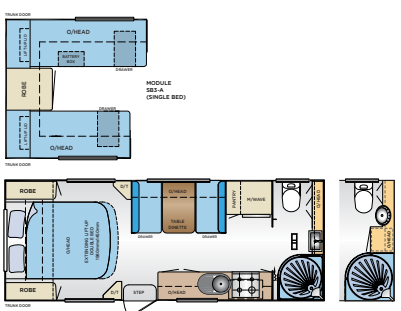
Tare weight: 1704kg
Tow ball: 172kg

19.61-2 CARAVAN



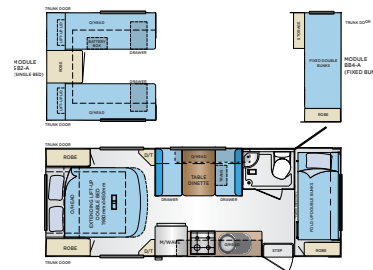
Tare weight: 1860kg
Tow ball: 130kg

20.62-2 CARAVAN



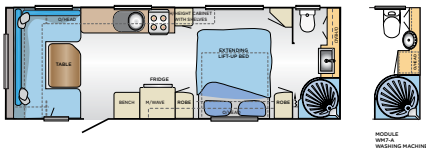
Tare weight: 1900kg
Tow ball: 143kg

20.62-3 CARAVAN



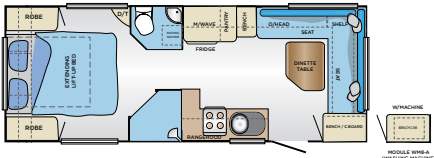
Tare weight: 1980kg
Tow ball: 155kg

21.66-3 CARAVAN



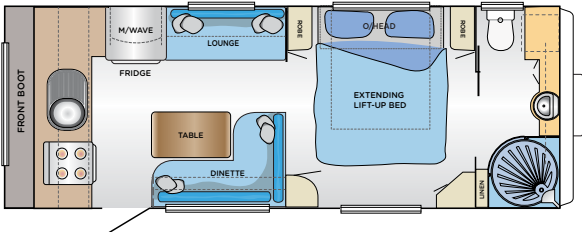
Tare weight: 2035kg
Tow ball: 152kg

21.66-4 CARAVAN



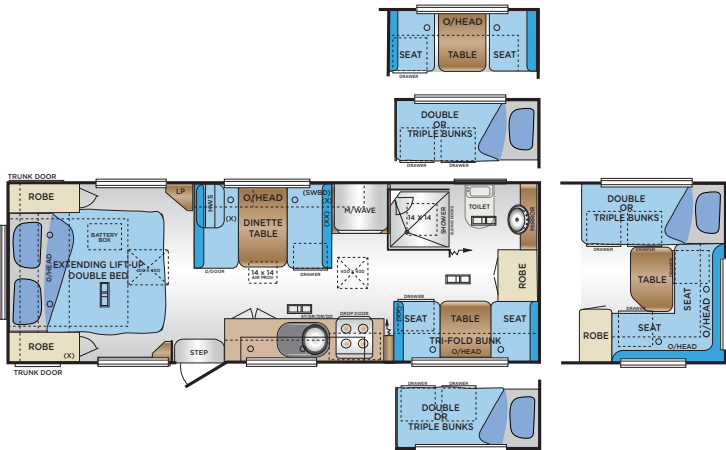
Tare weight: 2020kg
Tow ball: 175kg

21.66-7 CARAVAN



Tare weight: 2035kg
Tow ball: 152kg

22.68-1 CARAVAN



Tare weight: 2035kg
Tow ball: 152kg

PEACE OF MIND WITH JAYCO

We understand that purchasing a Recreational Vehicle is a significant investment so it is important that you make the right decision with a brand that you can trust.

Here are 5 main reasons why Jayco should be your RV of choice:

01. Jayco Warranty Program:

Australia's most respected Warranty offers you 1 year protection on your new Jayco. We take pride in what we build and want to offer you peace of mind that you are covered by Australasia's largest dealer and service network stocking an extensive range of parts to ensure that you can focus on the job at hand... having fun.

02. Jayco Roadside Assist*:

3 Years protection offering 24 Hour assistance in times of need. Jayco is the only RV Manufacturer to offer you complimentary Roadside Assist on your new Jayco for 3 years. This program is tailored specifically to offer you roadside support for your new Jayco. This support is there for you 24 hours a day 365 days a year. When you are enjoying the freedom of touring, you can be reassured that Jayco is only a phone call away to support you in an emergency on the road.

03. Dealer and Service Network:

Our Dealer and Service Network is the most comprehensive in Australia. We also carry parts in stock to ensure that we can service you.

04. Value for Money:

We are the most efficient manufacturer in Australia and combined with our significant buying power means that you get more features for less.

05. Resale Value:

It is inevitable that you will sell or trade in your RV when you are looking to upgrade. Jayco products hold their value better than any other RV Brand. It is important to think about this when working out your costings on your new RV purchase.



THE TRUE VALUE OF OWNERSHIP

With Jayco, as mentioned, you get more amenities, more liveable, home-like features and superior construction for better durability and greater resale value. Simply put, you won't find another RV packed with more **true value** — from the time of purchase to the time you sell.

- + 1-year warranty
- + 3-Year Roadside Assist*
- + Dealer & Service Network (95 Service Agents)
- + Value for Money
- + Better resale value

= True Value of Jayco Ownership

*Not available in New Zealand

COMMUNITY PASSION & SUPPORT



Ever mindful of its role in the wider community, Jayco is an active supporter of a myriad of charitable groups and organizations and are one of the most passionate supporters of Australian sport.

Jayco is involved in many sporting programs, with the aim of giving young athletes the support required for them to excel on the world stage. Over the years Jayco has supported a number of teams in their quest for Gold at the Olympics such as the Australian Opals Womens Basketball Team and the Australian Mens & Womens Road and Track Cycling teams.

Jayco is also a long time sponsor of the Jayco Dandenong Rangers, a fourteen year partnership with the current defending WNBL Champions.



IN GOOD COMPANY



JAYCO STORY

Over the past 38 years, Jayco has built a solid reputation as Australia's favourite recreational vehicle brand.

But even more importantly, our extensive range of recreational vehicles has again been fine tuned as we at Jayco continue pushing the envelope to ensure customer satisfaction and comfort.

And, while our commitment to innovation ensures that Jayco remains the recreational vehicle of choice for pleasure seekers throughout Australia and New Zealand, our mission hasn't altered since day one.

Jayco will continue to invest in manufacturing capabilities and equipment and increase resources in research and development.

All Jayco RV's fully comply with the associations code of manufacturing.



What's more, Jayco offers Australasia's largest range of models, layouts and features, while our manufacturing efficiencies allow us to offer you more for less (our RV's also have higher resale value than any other brand ... all the better for when you upgrade to your next Jayco!) And importantly, the buck doesn't stop when you leave the shop.

Jayco now employ over 800 people from the South East Melbourne Region, the Jayco family are hard working people, passionate about building great products for you to enjoy.

From all of us at Jayco, the message is pre-eminent.

***Sound business... Quality product...
Value for money... Peace of mind***



**Your nearest authorised
Jayco sales dealer:**

**WWW.JAYCO.COM.AU
1300 JAYCO RV (1300 52926 78)**

Jayco Corporation owns the copyright in this Brochure. Unauthorised use, reproduction or adaption is forbidden and will be prosecuted. Due to ongoing improvement, the specifications in this brochure are subject to change without notice.

©JAYCO 2011 P.O. Box 636 Dandenong VIC Australia 3175