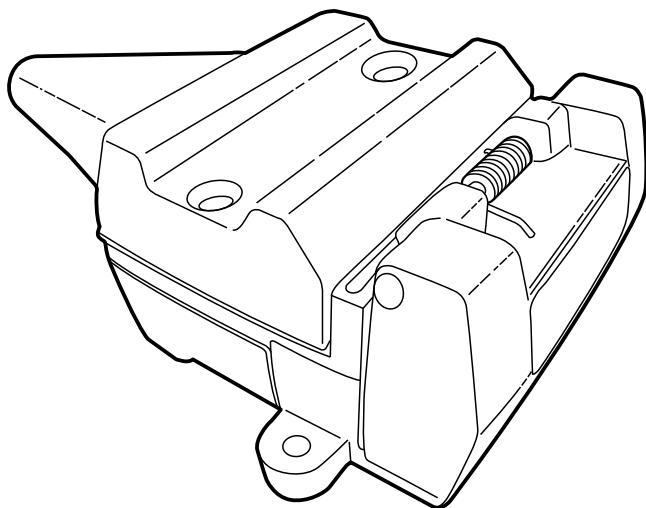




CARAVAN

Various Models with 12-pin Plug

Fitting Time: 30 minutes



Tow Vehicle Requirements Instructions

General Notes

- Read through the fitting instructions before installation.
- Always install the accessory following the fitting instructions. Failure to do so may cause damage to the vehicle or the accessory.
- Ensure all recyclable discarded vehicle accessory components and packaging are recycled following local recycling regulations.
- It is always recommended that this accessory is fitted by a qualified technician.
- Safely store and protect any removed vehicle components.
- Remove all metal swarf and dust from all vehicle surfaces if surface is used for accessory installation.

Safety Notes

- Check that all work practices comply with safety standards.
- Please wear appropriate clothing and use safety equipment.

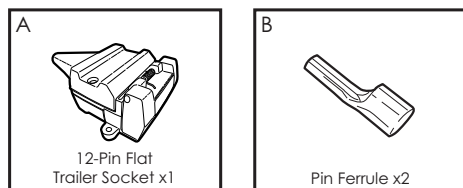


Fitting Time

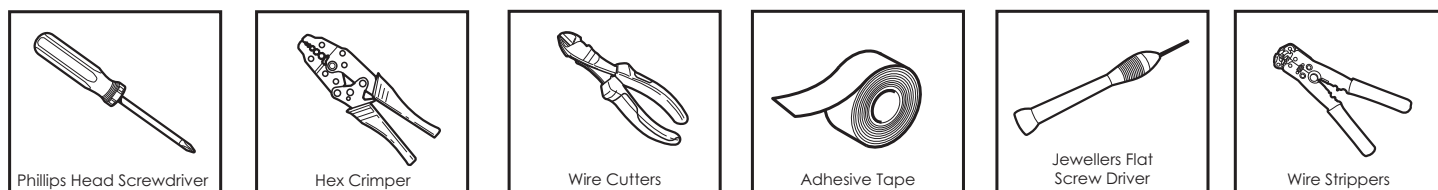


30 minutes

Parts Supplied



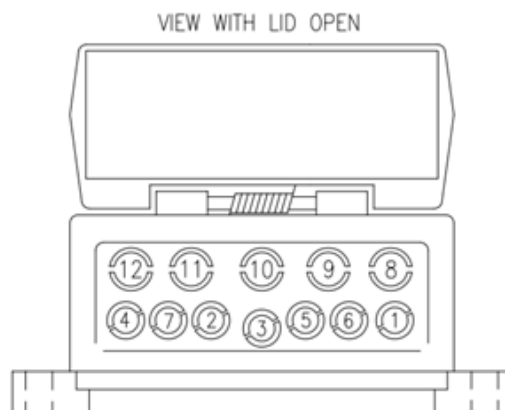
Tools and Materials Required



All Jayco caravans utilise a 12-pin plug manufactured to Australian Standard AS4177.5-2004.

The following instruction is to ensure adequate wire sizes are used to support van electrical requirements, minimising voltage drop and resistance in the circuits.

A mating 12-pin socket is supplied with the caravan to fit to your towing vehicle. A pinout diagram of the socket is shown below:



Below is a table listing each pin, what circuit to connect to on the towing vehicle, and the minimum wire size to be used:

Pin #	Function	Colour	Min. Wire Size (T)		Special Connection Instructions
			mm ²	AWG	
1	Left Indicator	Yellow	1.25	16	
2	+12V Supply from Battery	Black	3.0	13	Connect directly to vehicle battery with a 20A fuse
3	Ground	White	3.0	13	Connect to vehicle chassis (likely already connected through vehicle trailer wiring)
4	Right Indicator	Green	1.25	16	-
5	Electric Brakes	Blue	2.0	14	Connect to Electric Brake Controller
6	Stop Lamp	Red	1.25	16	-
7	Tail Lamps	Brown	1.25	16	-
8	<i>Not Connected</i>	-	-	-	-
9	Fridge +12V Supply (direct from battery)	Pink	10.0	8	Connect direct to vehicle battery positive terminal with a 30A fuse
10	Fridge Ground (direct from battery)	White	10.0	8	Connect direct to vehicle battery negative terminal
11	<i>Not Connected</i>	-	-	-	-
12	<i>Not Connected</i>	-	-	-	-

(T) - mm² refers to the cross-sectional area of the copper in the wire.

Wire labelled as “6mm Auto” (for example) may not have 6mm² cross-sectional area

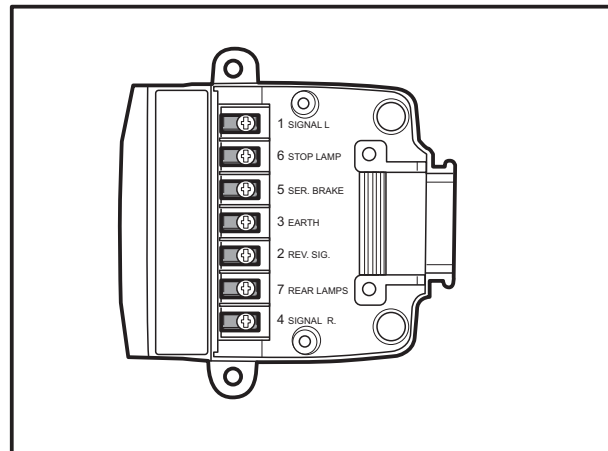
Important


It is critical that the correct wire size is used for each wire, otherwise damage could occur to the vehicle and caravan wiring. Consult a qualified auto electrician if you are unsure.

– Step 1

- Pins 1-7 will likely be connected through the towing vehicle's existing trailer wiring, and the wires can simply be removed from the existing vehicle trailer socket and housed in the correct pins on the supplied 12-pin socket.

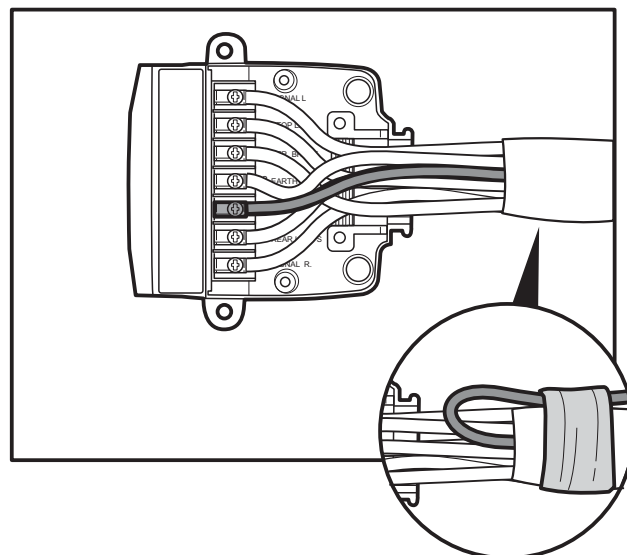
Note: Consult your vehicle dealer or a qualified auto electrician if you are unsure.



– Step 2

- Pin 2 may be connected to the towing vehicle's reverse signal through the existing vehicle trailer wiring. If so, remove this wire from the existing vehicle trailer socket and tape it back. Then connect a new wire with a 20A fuse directly from the vehicle battery to pin 2 on the supplied 12-pin socket (refer to table above for minimum wire size required)

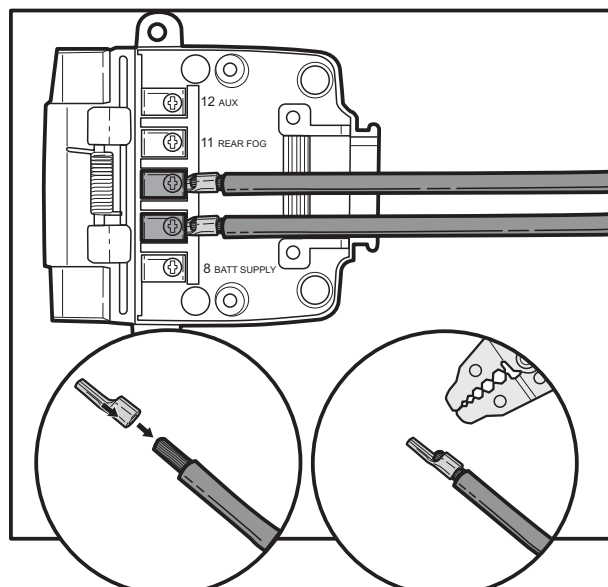
Note: Do not connect Pin 2 to any other existing power circuit on the vehicle. This could cause damage to the vehicle wiring. Consult your vehicle dealer or a qualified auto electrician if you are unsure.



– Step 3

- Pins 9 & 10 must be connected directly to the towing vehicle battery, refer to table above for minimum wire size required. Pin 9 wire should be fused with a 30A fuse as close to the vehicle battery as possible. The supplied pin ferrules should be crimped on to the wire ends before fitting the wires into the supplied 12 pin socket. The pin ferrules must be crimped with a suitable hex crimper as shown.

Note: Do not connect Pin 9 to any other existing power circuit on the vehicle. This could cause damage to the vehicle wiring. Consult your vehicle dealer or a qualified auto electrician if you are unsure.





– Step 4

- It is recommended that a voltage-sensing battery isolator relay is also installed in series with the fridge +12V battery supply in order to prevent the caravan fridge from draining the towing vehicle battery. The relay should be fitted and connected as close to the vehicle battery as possible – refer to the relay manufacturer instructions for exact installation requirements.

Note: Consult your vehicle dealer or a qualified auto electrician if you are unsure.

– Step 5

- Connect the caravan to the towing vehicle.
- Test all caravan lamps and other electrical devices for correct operation.